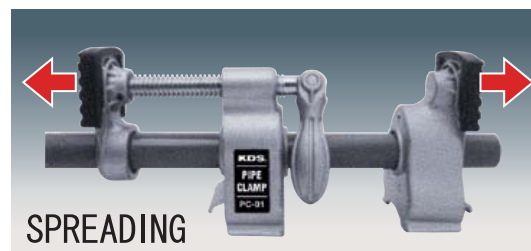
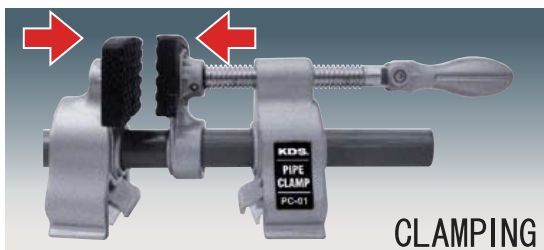
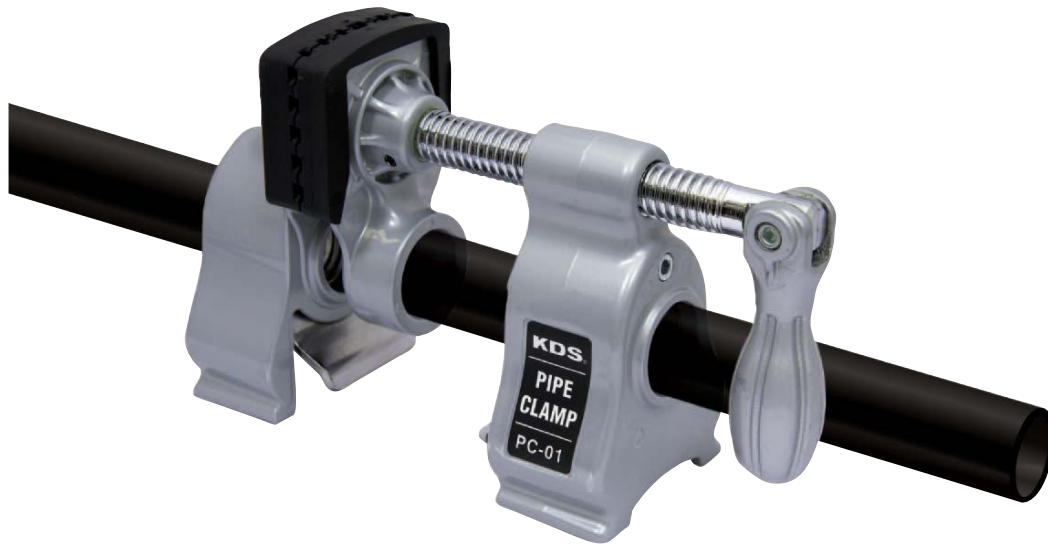


PIPE CLAMP & SPREADER

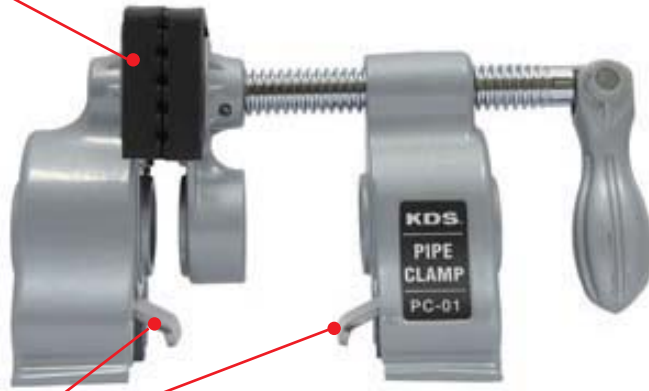
Professional heavy duty Pipe Clamp & Spreader will be added to Muratec-KDS's lineup.

Specialty:

- 1) The body is made of aluminum alloy and steel parts.
- 2) Capable for both CLAMPING and SPREADING.
- 3) Clamping force is up to 2,200 lbs (1,000kg) in Maximum.
Recommended metalworking, woodworking and frame assembly etc..



- Comes with 2 soft pads. (Easy removable)

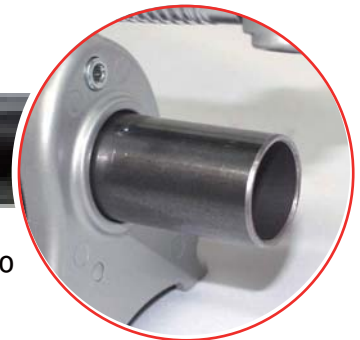
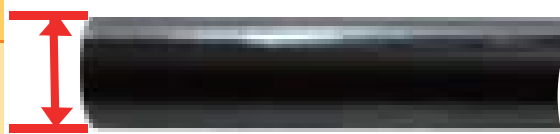


Flexible handle

- Quick release trigger on both side

● Pipe specification

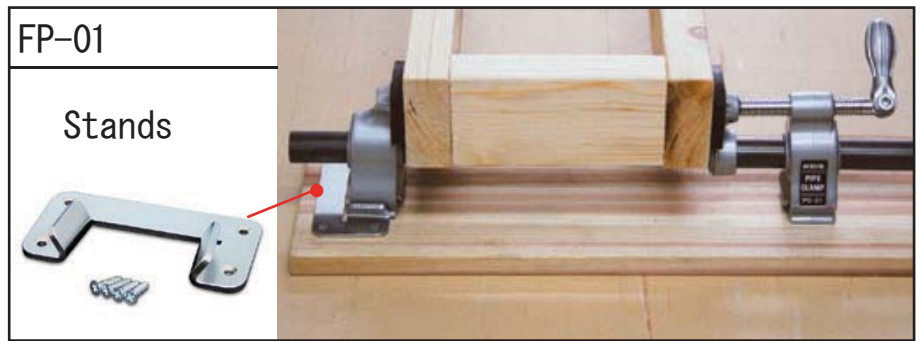
Black pipe
 $\phi 27.2\text{mm}$, 3/4 inch



*When use the general pipe available in the market, be sure to check the external diameter is even and correct.

Without screw thread

● Options



Cat. No.	Description	CTN	N. W. (kgs)	G. W. (kgs)	Carton size D x W x H(Cm)	M3
PC-01	PIPE CLAMP & SPREADER	(1 x 6) x 2	14	16	51 X 29 X 26	0.039
Options	FP-01	Stands for PC-01	12 (1 x 12)			
	PC-SP2	SOFT PADS (2pcs)	12 (1 x 12)			

● Packaging



Pipe clamp

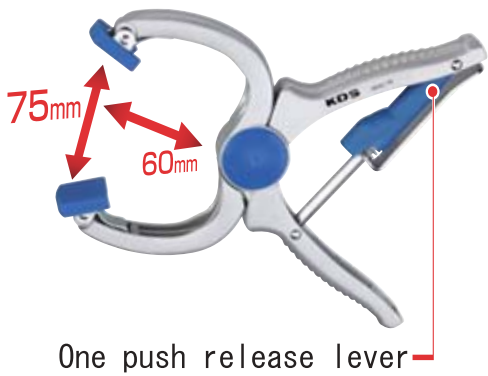


Metal bar clamp



Metal handy clamp

Metal Handy clamp



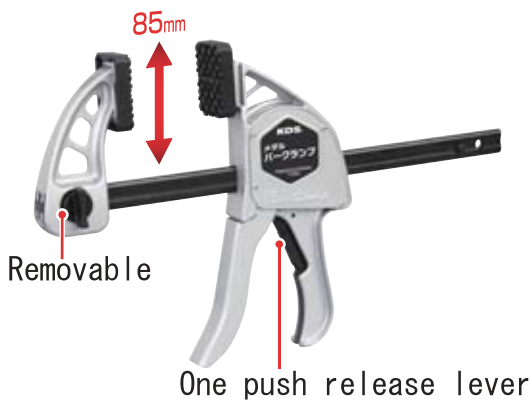
Aluminum pressure adjusting power clamp.
Cushioned jaw heads with auto bounce-back action when tightened.

*Maximum clamping force: 66lbs (30kg)

Cat.No.	Capacity	CTN(pcs.)	N.W.(kgs)	G.W.(kgs)	M3
MHC-76	75mm	48(12x4)	15	17	0.051



Metal Bar Clamp



Bar Clamp & Spreader with aluminum alloy body and steel, forged parts.
Buffered jaw head with auto bounce-back action when tightened.

Carbon steel bar.

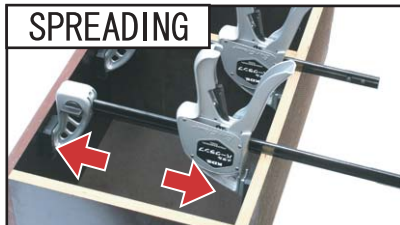
Jaw depth of 85mm with pads.

Quick release trigger on the handle.

*Maximum clamping force: 770lbs (350kg)



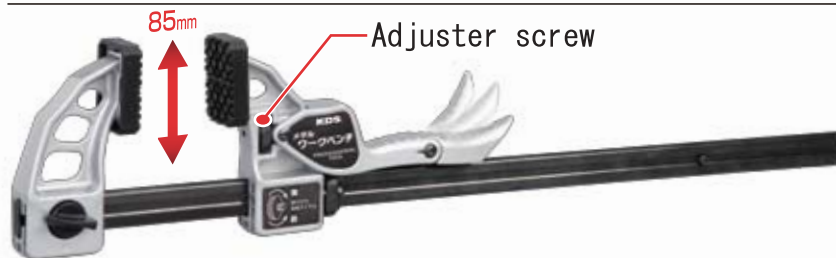
Cat.No.	Capacity	CTN(pcs.)	N.W.(kgs)	G.W.(kgs)	M3
MBC-150	150mm	12(6x2)	11	13	0.026
MBC-300	300mm		12	14	0.036
MBC-450	450mm		14	16	0.045
MBC-600	600mm		15	17	0.056
MBC-1200	1270mm	12(4x3)	20	22	0.098



Options: MP-02 (Metal pads)



Metal Hold Down Clamp



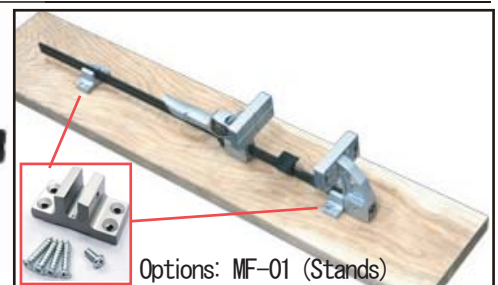
Hold Down Clamp & Vise with aluminum alloy body and steel forging parts.

Carbon steel bar.

Jaw depth of 85mm with pads.

Lever handle for easy release.

*Maximum clamping force: 770lbs(350kg)



Cat.No.	Capacity	CTN(pcs.)	N.W.(kgs)	G.W.(kgs)	M3
MWB-150	150mm	12(6x2)	11	13	0.019
MWB-300	300mm		13	15	0.026
MWB-450	450mm		15	17	0.032
MWB-600	600mm		17	19	0.038
MF-01	2 Stands for MWB series	12(4x3)	2	3	0.025

For further details, please contact with your counter personal at KDS.